

Metallbalgkupplung EWHL

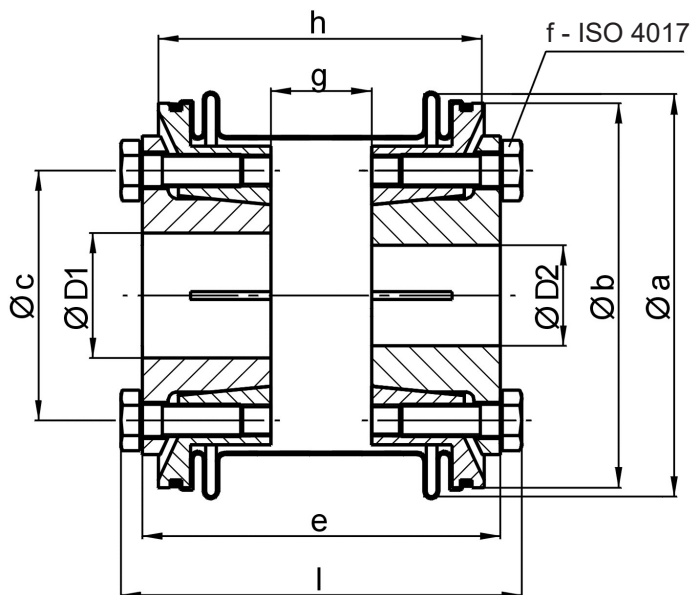
Metal bellows coupling EWHL

- gerader Balg
- beidseitige Konus-Klemmnaben
- geringe Rückstellkräfte
- hohe Torsionssteife

- straight bellows
- conical hub on both sides
- low restoring forces
- high torsional rigidity

Technische Daten / technical data:

| EWHL | | 25 | 50 | 65 | 100 | 200 | 300 | 450 | 540 | 850 | 1500 | 2500 |
|--|--------------------------------------|--------|--------|--------|--------|--------|--------|--------|--------|--------|--------|-------|
| Nennmoment nominal torque | [Nm] | 25 | 50 | 65 | 100 | 200 | 300 | 450 | 540 | 850 | 1500 | 2500 |
| Trägheitsmoment moment of inertia | [10 ⁻³ kgm ²] | 0,1 | 0,1 | 0,3 | 0,75 | 0,84 | 2,3 | 2,4 | 4,8 | 18 | 19 | 100 |
| Torsionssteife torsional stiffness | [Nm/arcmin] | 10 | 11 | 13 | 24 | 30 | 53 | 80 | 100 | 160 | 290 | 700 |
| max. Drehzahl max. speed | [min ⁻¹] | 25.000 | 25.000 | 23.000 | 18.500 | 18.500 | 15.000 | 15.000 | 12.500 | 10.000 | 10.000 | 7.500 |
| max. Wellenversatz max. shaft displacement | axial ± [mm] | 0,3 | 0,3 | 0,3 | 0,5 | 0,3 | 0,4 | 0,4 | 0,5 | 0,7 | 0,6 | 0,4 |
| | lateral [mm] | 0,2 | 0,2 | 0,3 | 0,4 | 0,3 | 0,3 | 0,3 | 0,5 | 0,6 | 0,5 | 0,5 |
| Federsteife spring rate | axial [N/mm] | 150 | 160 | 90 | 100 | 220 | 210 | 300 | 300 | 200 | 520 | 550 |
| | lateral [N/mm] | 150 | 170 | 80 | 95 | 120 | 160 | 260 | 360 | 170 | 490 | 590 |
| Masse ca. weight approx. | [kg] | 0,4 | 0,4 | 0,7 | 1,2 | 1,25 | 2,2 | 2,3 | 3,4 | 7,5 | 7,7 | 23 |
| Anziehmoment d. Schrauben tightening torque of screws | [Nm] | 3 | 3 | 10 | 10 | 10 | 25 | 25 | 50 | 90 | 90 | 210 |



Werkstoff:
Balg: Edelstahl
Naben: Vergütungsstahl
Schrauben: ISO 4017 vernickelt

material:
bellows: stainless steel
hubs: tempered steel
screws: ISO 4017 nickel plated

Abmessungen nach / dimensions acc. to DIN ISO 2768 cH:

| EWHL | | 25 | 50 | 65 | 100 | 200 | 300 | 450 | 540 | 850 | 1500 | 2500 |
|------------------------|------|----|----|----|-----|-----|-----|-----|-----|-----|------|------|
| Øa | [mm] | 56 | 56 | 66 | 82 | 82 | 101 | 101 | 122 | 157 | 157 | 203 |
| Øb | [mm] | 52 | 52 | 62 | 78 | 78 | 96 | 96 | 112 | 140 | 140 | 194 |
| Øc | [mm] | 30 | 30 | 36 | 50 | 50 | 62 | 62 | 70 | 98 | 98 | 138 |
| e | [mm] | 51 | 51 | 61 | 70 | 76 | 89 | 89 | 98 | 137 | 137 | 211 |
| 6 x f | | M4 | M4 | M6 | M6 | M6 | M8 | M8 | M10 | M12 | M12 | M16 |
| g | [mm] | 15 | 15 | 13 | 16 | 22 | 25 | 25 | 26 | 44 | 44 | 72 |
| h | [mm] | 47 | 47 | 55 | 64 | 70 | 81 | 81 | 88 | 119 | 119 | 161 |
| L | [mm] | 57 | 57 | 69 | 78 | 84 | 101 | 101 | 111 | 152 | 152 | 231 |
| Ø D1/2 min. | [mm] | 10 | 12 | 12 | 18 | 22 | 28 | 28 | 35 | 40 | 42 | 50 |
| Ø D1/2 max. | [mm] | 19 | 19 | 24 | 35 | 35 | 42 | 42 | 48 | 70 | 70 | 102 |
| vorgebohrt prebored | [mm] | 8 | 8 | 11 | 17 | 17 | 25 | 25 | 28 | 38 | 38 | 49 |

Temperaturbereich: -40°C bis 300°C

temperature range 233 K up to 573 K

Hinweis: höhere Drehmomente auf Anfrage möglich

Note: higher torques possible on request

Bestellbeispiel / ordering example:

EWHL 450 - D1 = 28 H7 - D2 = 35 H7

